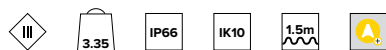
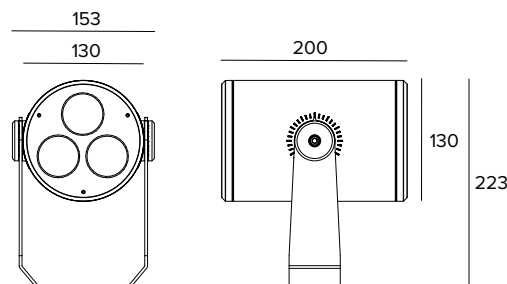


1E4061 | DART Round Medium RGBW

Professional adjustable LED projector



The fixture's photometric values can be found on the following pages



The figures on the drawing are expressed in mm.

SOURCE

RGBW light module made of RGBW LED multichip. Color temperature of the white source: 6500K.

Energy efficiency class: F

Nominal power: 33W

Nominal flux: See photometries

CCT nominal: See photometries

Lifetime (L80/B10): >50000h tq +25°C

ILLUMINOTECHNICAL CHARACTERISTICS

Equipped with precision methacrylate lenses.

Optic: LENS

Beam angles: NSP

Optical efficiency: 81%

Fixture flux: See photometries

Luminous efficacy: See photometries

Photobiological safety: Compliant with RG1 low risk group

MECHANICAL CHARACTERISTICS

Painted die-cast anodised aluminium body and painted stainless steel mounting bracket. Tempered extra clear front glass.

Colour and finish: Ferrite

Weight: 3.35Kg

Degree of protection: IP66

Mechanical Resistance: IK10

ELECTRICAL CHARACTERISTICS

Remote DMX-RDM electronic driver with 4 independent constant current outputs. The driver is housed inside an IP68 box and allows to control 1 fixture. Controlled using DMX-RDM protocols that make it possible to programme the fixture remotely (no dip-switch) using the DMX data line. Programming the fixtures is done using the USB-RDM programmer that is available as an accessory. All versions are pre-wired with a 1.5m long 8-pole feeding cable (to be connected to the IP68 driver box).

Fixture Power: See photometries

Power supply: 850mA

Insulation Class: CLASS 3

Driver included: NO

Ambient temperature: -25°C / +35°C

INSTALLATION

Mounting bracket with aiming adjustability. Adjustable up to $\pm 45^\circ$ on the horizontal plane and $+90^\circ/-45^\circ$ on the vertical plane.

NOTES

Uses the "Waterblock Smart" technical solution that involves resin coating the connection cables, limiting the risk of humidity reaching the driver or the fixture. It is possible to subject the product to Cataphoresis treatment on request. 110-277Vac version available on request. Photometrics show the maximum emission values of fixtures. Values related to the power consumption of the fixture do not take into account the consumption of the accessory driver, which depends on the choice of driver. Commissioning of the control system via free APP; the intervention of a specialist technician can be quoted on request.

WARRANTY

5 years.

WARNING

Luminaire designed for disposal/recycling at end-of-life. Replaceable (LED only) light source by a professional.

Due to the technological evolution of the electronic components, the data provided may be updated, and as such, confirmation must be requested during the order process.

Luminous flux and power supply have +/-10% tolerances with respect to the indicated value. tq +25°C (CIE 121).

We reserve the right to make technical changes.

Targetti Sankey S.r.l.
Via Pratese, 164
50145 Firenze - Italy
Tel: +39 055 37911
targetti.com
targetti@targetti.com

CCIAA Firenze
Share Capital:
€ 500.000,00
VAT N. (IT):
01537660480
R.E.A: FI-275656

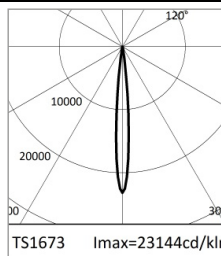
TARGETTI

1E4061 | DART Round Medium RGBW

Professional adjustable LED projector



		H(m)	D(m)	E _{max} (lx)		
	-			10°		
	-			10°		
Fixture Power	33W	1	0.17	36267		
Source Flux	1567lm	2	0.34	9067		
Fixture Flux	1265lm	3	0.50	4030		
Efficacy	39lm/W	4	0.67	2267		
TS1673	I _{max} =23144cd/klm	I _{max}	36267cd	5	0.84	1451



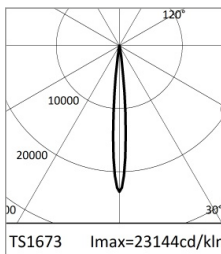
		H(m)	D(m)	E _{max} (lx)		
	-			10°		
	-			10°		
Fixture Power	25W	1	0.17	18839		
Source Flux	814lm	2	0.34	4710		
Fixture Flux	657lm	3	0.50	2093		
Efficacy	26lm/W	4	0.67	1177		
TS1673	I _{max} =23144cd/klm	I _{max}	18839cd	5	0.84	754

RGBW

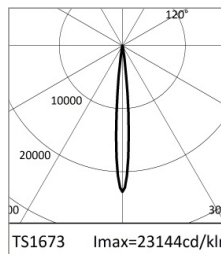
Fixture Power	33W
Nominal flux	1567lm
Fixture flux	1265lm
Luminous efficacy	39lm/W

RGB

Fixture Power	25W
Nominal flux	814lm
Fixture flux	657lm
Luminous efficacy	26lm/W



	6500K	H(m)	D(m)	E _{max} (lx)		
	-			10°		
	-			10°		
Fixture Power	9W	1	0.17	19904		
Source Flux	860lm	2	0.34	4976		
Fixture Flux	694lm	3	0.50	2212		
Efficacy	81lm/W	4	0.67	1244		
TS1673	I _{max} =23144cd/klm	I _{max}	19904cd	5	0.84	796



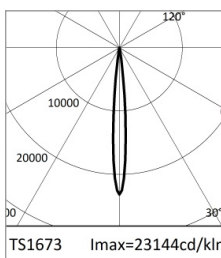
		H(m)	D(m)	E _{max} (lx)		
	-			10°		
	-			10°		
Fixture Power	7W	1	0.17	7360		
Source Flux	318lm	2	0.34	1840		
Fixture Flux	257lm	3	0.50	818		
Efficacy	39lm/W	4	0.67	460		
TS1673	I _{max} =23144cd/klm	I _{max}	7360cd	5	0.84	294

WHITE

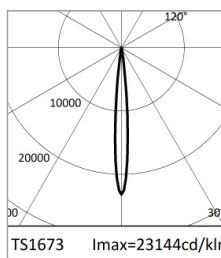
CCT nominal	6500K
Fixture Power	9W
Nominal flux	860lm
Fixture flux	694lm
Luminous efficacy	81lm/W

RED

Fixture Power	7W
Nominal flux	318lm
Fixture flux	257lm
Luminous efficacy	39lm/W



		H(m)	D(m)	E _{max} (lx)		
	-			10°		
	-			10°		
Fixture Power	10W	1	0.17	13261		
Source Flux	573lm	2	0.34	3315		
Fixture Flux	463lm	3	0.50	1473		
Efficacy	46lm/W	4	0.67	829		
TS1673	I _{max} =23144cd/klm	I _{max}	13261cd	5	0.84	530



		H(m)	D(m)	E _{max} (lx)		
	-			10°		
	-			10°		
Fixture Power	9W	1	0.17	2592		
Source Flux	112lm	2	0.34	648		
Fixture Flux	90lm	3	0.50	288		
Efficacy	10lm/W	4	0.67	162		
TS1673	I _{max} =23144cd/klm	I _{max}	2592cd	5	0.84	104

GREEN

Fixture Power	10W
Nominal flux	573lm
Fixture flux	463lm
Luminous efficacy	46lm/W

BLUE

Fixture Power	9W
Nominal flux	112lm
Fixture flux	90lm
Luminous efficacy	10lm/W

Due to the technological evolution of the electronic components, the data provided may be updated, and as such, confirmation must be requested during the order process.
Luminous flux and power supply have +/-10% tolerances with respect to the indicated value. tq +25°C (CIE 121).

We reserve the right to make technical changes.

Targetti Sankey S.r.l.
Via Pratese, 164
50145 Firenze - Italy
Tel: +39 055 37911
targetti.com
targetti@targetti.com

CCIAA Firenze
Share Capital:
€ 500.000,00
VAT N. (IT):
01537660480
R.E.A: FI-275656



1E4061 | DART Round Medium RGBW

Professional adjustable LED projector

Related codes

Power Supply

Code
1E3883

DMX 4 channel driver - 850mA.
50W, LxHxP=220x80x120mm, 120-277Vac.
IP68 gray powder coated aluminum box.

Accessories

Filter



Colour	Code
	1E4263

Blade of light filter.
PMMA holographic filter for a blade of light effect.
Completed with powder coated aluminum alloy holder ring.

Screen



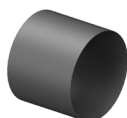
Colour	Code
	1E4007

Asymmetric screen.
Powder coated stainless steel.



Colour	Code
	1E4008

Cylindrical screen.
Powder coated stainless steel.
Short version.



Colour	Code
	1E4058

Cylindrical screen.
Powder coated stainless steel.
Long version.

Mounting System



Colour	Code
	1E3026

Plate for fixture rotation.
Powder coated stainless steel.



Dimensions ØxH mm	Colour	Code
96x182		1E3028

Earthspike.
Powder coated stainless steel.

Due to the technological evolution of the electronic components, the data provided may be updated, and as such, confirmation must be requested during the order process.
Luminous flux and power supply have +/-10% tolerances with respect to the indicated value. tq +25°C (CIE 121).

We reserve the right to make technical changes.

Targetti Sankey S.r.l.
Via Pratese, 164
50145 Firenze - Italy
Tel: +39 055 37911
targetti.com
targetti@targetti.com

CCIAA Firenze
Share Capital:
€ 500.000,00
VAT N. (IT):
01537660480
R.E.A.: FI-275656

TARGETTI

1E4061 | DART Round Medium RGBW Professional adjustable LED projector

Mounting System



Colour Code

● 1E2825

Pole bracket.
Anodised and powder coated aluminium.
Pole Ø 60mm (+/-2mm).



Colour Code

● 1E3027

Pole multiple mounting system.
Powder coated stainless steel.
To be completed with 1E2825.
Max 4 projectors.

Control systems



Code

1E2767

USB-RDM Programmer code.
DMX-RDM (Remote Device Management) address planner.
Used with the "RDM Targetti" software that can be downloaded for free from the Targetti website download section.
To be used with all RGBW products.
The USB-RDM programmer manages to direct DMX-RDM fixtures if there are no BUFFER or Splitter DMXs on the section.
Please refer to the instructions for more details.



Code

A077

my-SCENARIO Show Store.
Programmable DMX interface that integrates the latest innovations in lighting control in architectural and entertainment applications.
It features USB Type-C and Ethernet ports for programming and remote control.
The unit can be fully programmed with ESA Pro 2 software (available for Windows and Mac users) or via mobile applications such as Arcolis (available for iOS or Android devices).
It can be fully customised: pixel mapping, triggering management, patch configuration and much more.
The system offers great possibilities for the control of your lighting installation: multi zone control (allowing the management of up to 5 independent zones), extended triggers (time/date, Sunrise/Sunset, input ports, TCP/UDP commands), 16-bit channels management, full recovery after power loss, up to 99 total scenes, and 1024+ DMX channels.
The intuitive backlit keyboard comes with 10 preset buttons for a user friendly experience.



Code

1T6499

myScenario Wall.
DMX controller with a glass touch sensitive screen for architectural applications.
It can control two different DMX universes (2x 512 channels).
Stand alone function or connected to a computer using a USB port.
Software for creating scenarios (that can be downloaded from the Targetti website) included.
It can manage 10 different lighting zones and 50 scenarios per zone.
The touch keys on the front make it possible to modify and recall programmed scenarios.
USB cable included.
To be used with all RGBW products.

Due to the technological evolution of the electronic components, the data provided may be updated, and as such, confirmation must be requested during the order process.
Luminous flux and power supply have +/-10% tolerances with respect to the indicated value. tq +25°C (CIE 121).

We reserve the right to make technical changes.

Targetti Sankey S.r.l.
Via Pratese, 164
50145 Firenze - Italy
Tel: +39 055 37911
targetti.com
targetti@targetti.com

CCIAA Firenze
Share Capital:
€ 500.000,00
VAT N. (IT):
01537660480
R.E.A: FI-275656

